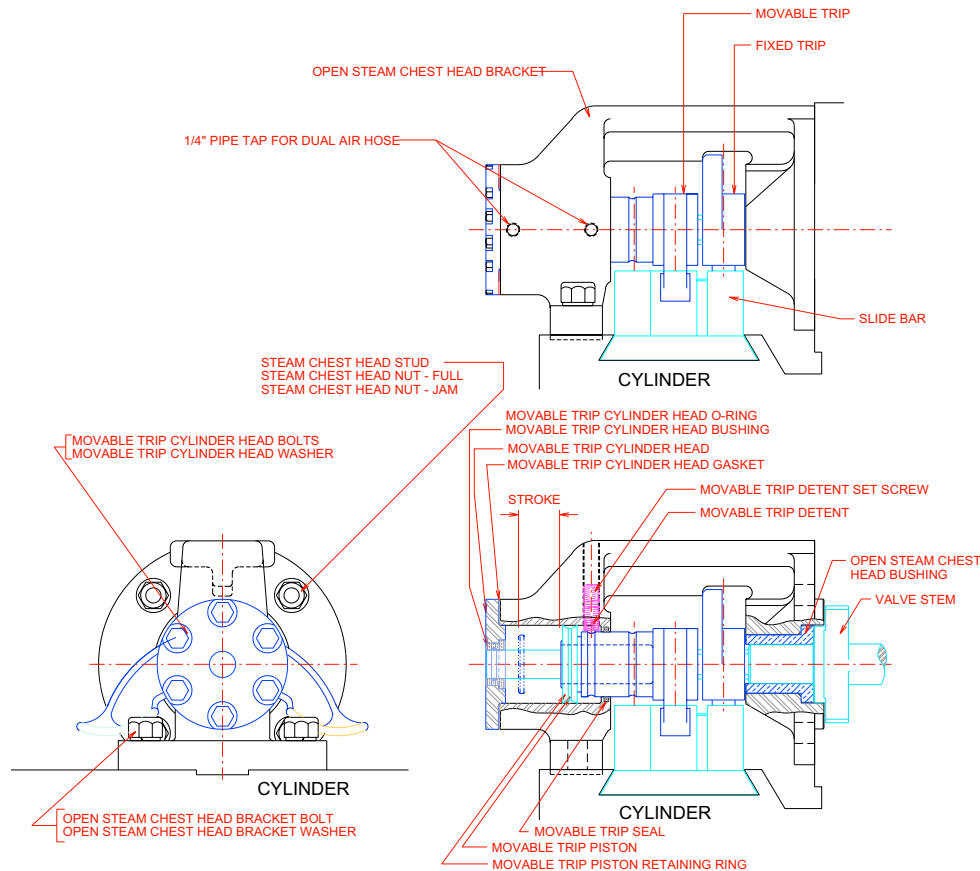


# VULCAN ONSHORE TIPS

## Vari-Cycle II

(306,505, 506, & 508, 510, 512 Hammers)



The Vulcan Vari-Cycle II offers all the advantages and ease of use of the original Vari-Cycle with fewer parts and less maintenance. When maintenance is required, it will be easier and less expensive. The Vari-Cycle II uses the same principle as the original Vari-Cycle, except the trip shifting cylinder is built into the Open Steam Chest Head Bracket thus reducing the number of parts. Air is supplied to the movable trip piston to move the trip into either the long stroke or short stroke position. A detent holds the trip in position when the air supply is removed. For the 306, 505 & 506 Hammers the Vari-Cycle II is P/N 13711. For the 508, 510 & 512 Hammers the Vari-Cycle II is P/N 13730. The Vari-Cycle II is designed to fit the above sizes of Hammers with a Traverse Trip or Vari-Cycle. On your next new Hammer specify Vari-Cycle II or contact Vulcan to see if your Hammer can be converted.



VULCAN FOUNDATION EQUIPMENT,  
INC.

✉ 2501 Riverside Drive

P.O. Box 5413

Chattanooga, TN 37406 U.S.A.

☎ (423) 698-1581

Toll Free (800) 742-6637

Fax (423) 698-1587

